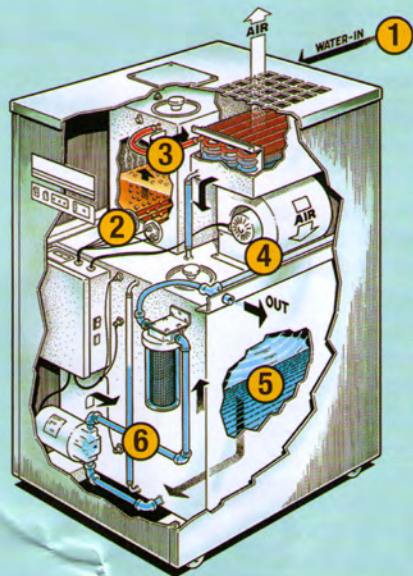


# H2Only 60/75 On Tap

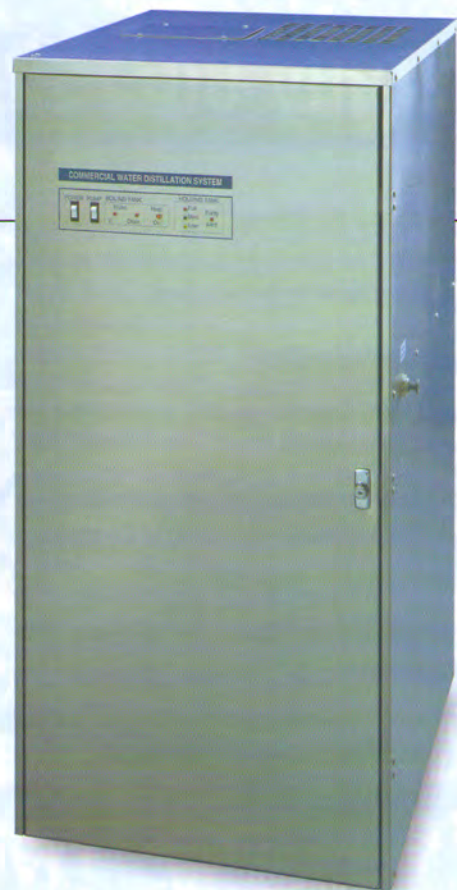
## *Commercial Steam-Distillation Water Purification System*

The **H2Only 60/75 On Tap** is a robust and dependable steam-distillation water purification unit that is specified for a wide variety of commercial and residential applications. **The H2Only 60/75 On Tap** produces up to 60 gallons of 99.9% pure drinking water per day and its' stainless steel storage tank holds 75 gallons. This rugged unit is ideal for networked pure drinking water systems in commercial or residential buildings to supply large groups of people.

An **H2Only On Tap** Network provides peace of mind by removing impurities and bacteria found in source water, resulting in reliably delicious, pure drinking water. This abundant supply of fresh water will encourage individuals to cut down on single-use bottled water consumption and contribute to the growing movement to reduce this waste.



*Internal representation of H2Only 60/75 On Tap steam-distillation process.*



### *Distillation & The Hydrologic Cycle:*

*Just as Mother Nature takes ocean water and converts it to pure rain water, our steam-distillation units mimic the Hydrologic Cycle in the water purification process.*

- 1 Water is plumbed directly into the boiling tank from your home or office water supply.
- 2 A heating element boils the raw feed water and steam rises.
- 3 The steam passes into a condensing coil, leaving virtually all impurities and contaminants behind.
- 4 A fan cools the steam and converts it to liquid – pure, steam-distilled water.
- 5 A stainless steel storage tank holds up to seventy-five gallons of drinking water.
- 6 A demand pump delivers the steam-distilled water to a remote dispenser or faucet, refrigerator and/or icemaker.

*H2Only On Tap – Pure Water You Can Trust.*

# H2Only 60/75 On Tap

**The H2Only 60/75 On Tap** is a heavy-duty steam-distillation unit that will reliably produce abundant supplies of contaminant-free pure water for years to come.

## Features include:

- ▶ **Dual, interchangeable heating elements** to provide consistent production.
- ▶ **Purity alert protection** that will automatically shut down the unit if there is a deviation in purity in the system.
- ▶ **Compact design** allows for installation where space is limited.
- ▶ **High quality workmanship** and functionality at a modest price.
- ▶ **Food-grade stainless steel construction** and solid-state controls for reliable long-term functionality.

---

*"I enjoy the H2Only Water all the time. I am on a diet and all I drink is water. This water is great tasting and convenient"*

*- S. Maclaren, St. Moritz Resident*

---

**The H2Only 60/75 On Tap** is in use extensively throughout the United States and Worldwide. It has delivered such reliable performance and consistently pure water that the following institutions use it to ensure their pure water supply:

- |                               |                                |
|-------------------------------|--------------------------------|
| <b>Laboratories</b>           | <b>Coffee service</b>          |
| <b>Restaurants</b>            | <b>Medical applications</b>    |
| <b>Plating Industries</b>     | <b>Pharmaceutical Industry</b> |
| <b>Schools</b>                | <b>Hospitals</b>               |
| <b>Rest Homes</b>             | <b>Electronic Industries</b>   |
| <b>Photography businesses</b> | <b>Residential Apartments</b>  |
| <b>Dental Clinics</b>         | <b>Office Buildings</b>        |

*"Distillation provides us with the purest water obtainable... by all means make the smart choice in the type of water you drink. There should only be one choice — PURE!  
And pure means distilled."*

**— Harvey & Marilyn Diamond  
Fit For Life II: Living Health**



## SPECIFICATIONS

**POWER REQUIREMENTS:**  
60 amp, 240 volt, 1 Ph AC

**HEATING ELEMENTS (STANDARD):**  
Two 4,000 watt

**FEED WATER QUALITY:**  
softened water recommended

**FEED WATER SUPPLY:**  
Minimum 1/2" (1.27 cm) feed line at 30 psi minimum

**VENTING:**  
Minimum air-flow of 450 CFM

**RATED DISTILLED WATER PRODUCTION:**  
60 U.S. gallons (227 liters) per day

**DISTILLED WATER SUPPLY:**  
3 gallons per minute through standard pump

**WEIGHT:**  
Empty Unit 195 lbs (88.5 kg)  
Shipping Weight: 300 lbs (137 kg)  
Storage Tank Full 655 lbs (297 kg)

**UNIT DIMENSIONS:**  
Height: 63 inches (161 cm)  
Width: 25 inches (64 cm)  
Depth: 31.5 inches (80 cm)



1000 Portside Drive, Edgewater NJ 07020  
phone: 201.941.7785  
email: [info@h2onlywater.com](mailto:info@h2onlywater.com)  
[www.h2onlywater.com](http://www.h2onlywater.com)

© 2007 Aqua Pure, Inc. ALL RIGHTS RESERVED.  
Drawings & Illustrations: © Pure & Secure, LLC.